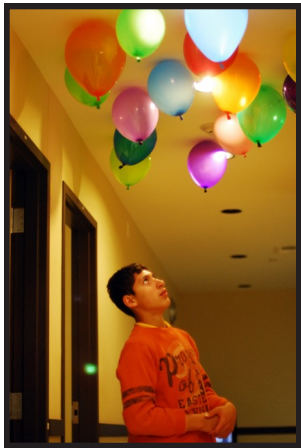
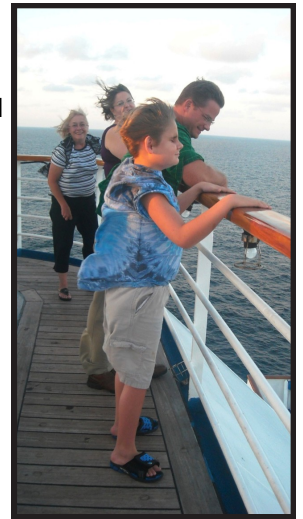


THE NATIONAL CONSORTIUM ON DEAF-BLINDNESS

The National Consortium on Deaf-Blindness would like to thank the following organizations for contributing their time, talent, and resources to create the *Open Hands Open Access Deaf-Blind Intervener Learning Modules*.



ARIZONA DEAFBLIND PROJECT
CALIFORNIA DEAF-BLIND SERVICES
CARROLL CENTER FOR THE BLIND
CHARGE SYNDROME FOUNDATION
CONNECTIONS BEYOND SIGHT AND SOUND PROJECT
DEAFBLIND CENTRAL—CENTRAL MICHIGAN UNIVERSITY
DERRICK FORE PHOTOGRAPHY
DESCRIBED AND CAPTIONED MEDIA PROGRAMS
DICAPTA
EAST CAROLINA UNIVERSITY—ONLINE DEAFBLIND INTERVENER PROGRAM
FLORIDA OUTREACH PROJECT
GEORGE BROWN COLLEGE—INTERVENOR PROGRAM
GEORGIA SENSORY ASSISTANCE PROGRAM
HELEN KELLER FELLOWS
IRIS CENTER
JKP INTERPRETING
KANSAS DEAF-BLIND PROJECT
NATIONAL FAMILY ASSOCIATION FOR THE DEAF-BLIND
NEW JERSEY CONSORTIUM ON DEAFBLINDNESS
NEW YORK DEAF-BLIND COLLABORATIVE
OREGON DEAF-BLIND PROJECT
OREGON HEALTH SCIENCES UNIVERSITY
OVERBROOK SCHOOL FOR THE BLIND
PARAPROFESSIONAL RESEARCH AND RESOURCE CENTER (PAR2A)
PENNSYLVANIA TRAINING AND TECHNICAL ASSISTANCE NETWORK
PERKINS SCHOOL FOR THE BLIND
PROJECT REACH (IL)
TEXAS SCHOOL FOR THE BLIND AND VISUALLY IMPAIRED
UNIVERSITY OF ARIZONA—PROJECT FOCUS
UNIVERSITY OF COLORADO DENVER
UNIVERSITY OF HAWAII AT MANOA
UNIVERSITY OF NORTHERN COLORADO, SCHOOL OF SPECIAL EDUCATION
UTAH SCHOOLS FOR THE DEAF AND THE BLIND
VANDERBILT COLLEGE OF EDUCATION AND HUMAN DEVELOPMENT
VANDERBILT UNIVERSITY SCHOOL OF MEDICINE—DEPARTMENT OF HEARING AND
SPEECH SCIENCES
VIRGINIA PROJECT FOR CHILDREN & YOUNG ADULTS WITH DEAF-BLINDNESS
WASHINGTON SENSORY DISABILITIES SERVICES
2ND STREET DESIGN LAB



OPEN HANDS, OPEN ACCESS DEAF-BLIND INTERVENER LEARNING MODULE CONTRIBUTORS

MODULE TEAM LEADS

Robbie Blaha
Michelle Clyne
Beth Kennedy
Kathee Scoggin
Bernadette Van Den Tillaart



MODULE TEAM CONTRIBUTORS



Johanna Borg—Teacher
Karen Christianson—Teacher and Intervener Trainer
Caroline Daley—Parent
Diane Foster—Parent
Vivecca Hartman—Parent
Tina Hertzog—Teacher
Melanie Knapp—Parent
Kimberly Lauger—Parent and Intervener Trainer
Jennifer Lester—Teacher
Barbara Martin — Intervener and Educational Interpreter
Patti McGowan—Parent
Luis Miranda—Intervener
Debbie Sanders—Teacher
Chris Montgomery—Educational Consultant Deafblind Outreach
Megan Cote—Project Coordinator
Lauri Triulzi—DeafBind Consultant
Holly Cooper, Ph.D.—Educational Consultant DeafBlind
Deanna Peterson—Teacher

ADVISORY COMMITTEE

Lyn Ayer, Ph.D.
Edgenie Bellah
Maurice Belote
Leslie Buchanan
Ritu V. Chopra, Ph.D.
Deborah Hatton, Ph.D.
Kimberly Lauger
Stephanie MacFarland, Ph.D.
Betsy McGinnity
Cyral Miller
Carolyn Monaco
Sam Morgan, Ed.D
Kristen Parsons
Susan Patten
Jerry Petroff, Ph.D.
Cindi Robinson
Charity Rowland, Ph.D.
Elisa Sanchez-Wilkinson
Donna Sobel, Ph.D.
Sheri Stanger
Naomi Tyler, Ph.D.
Alana M. Zambone, Ph.D.



OPEN HANDS, OPEN ACCESS DEAF-BLIND INTERVENER LEARNING MODULE CONTRIBUTORS

REVIEWERS



Jackie Brennan
Steven Davies
Julie Durando
Emily Taylor-Snell
Megan Conway, Ph.D.
Tom Conway
Silvia Correa-Torres, Ph.D.
Kristin Knight
P. Lynn Hayes, Ed.D, IC/TC
Susanne Morgan-Morrow
Angel Perez
Barb Purvis
Therese Rafalowski Welch, Ph.D.
Donna Riccobono
Gloria Rodriguez-Gil
Kathryn Wolff Heller, Ph.D.
Erin Yanez
Deanna Rothbauer



HOSTS

Holly Cooper, Ph.D.
Nancy Steele
Lauri Triulzi

MEDIA DESIGN

Mike Bicknell—Media Advisor
Amy Lancaster—Media Developer
Derrick Fore, Kristi Shuey—Photography
Kristi Shuey—Module Graphic Design
Suzanne Becker—Media Archivist



NCDB TEAM

Robbin Bull—NCDB Video Creator
Steven Davies—NCDB Reviewer
Jeff Denton—NCDB Web Support
Jay Gense—NCDB Director
Kaila Gibson—NCDB Team
Nancy Ganson—NCDB Travel Coordinator
John Killoran—NCDB Facilitator
Randy Klumph—NCDB Accessibility and Online Support
Peggy Malloy—NCDB Intervener Initiative Team Lead
Shelby Morgan—NCDB Team
Amy Parker, Ed.D—NCDB Module Creation Coordinator
Barb Purvis—NCDB Reviewer
Bernie Samples—NCDB Travel Support
Mark Schalock—NCDB Internal Evaluation
Nancy Steele—NCDB Module Host
Gregory Zobel, Ph.D.—Online Learning Design



Many other state project partners helped recruit field test participants to test the modules. These state partners included: Alabama, Alaska, Arkansas, California, Georgia, Indiana, Nebraska, Ohio, Pennsylvania, Kentucky, Tennessee, and West Virginia.

NCDB would like to thank these states as well as the field test participants.